

ACCOMMODATION TYPES:

University residence designed for national or international students. The units are shared between 2 to 4 students maximum. Private room with shared bathroom and Sectioned Private room with Semi-private bathroom.

BEDROOMS:

Sectioned Private Bedroom with Semi-Private Bathroom is a part of a studio apartment, featuring one twin-size loft bed for one student in a partitioned room separate from the living room, and sharing common space with another housemate. Private Bedroom with Shared bathroom is a part of a two-bedroom apartment, featuring one twin-size loft bed for one student, along with one study desk, a closet, and sharing common space with other housemates.

BED SIZE:

One twin-size loft bed

BATHROOM:

Sectioned Private Bedroom with Semi-private Bathroom = 2 students sharing it

Private room with Shared Bathroom = 3 students sharing it

KITCHEN:

The Kitchen contains the following:

Fridge, freezer, stove, oven, cutlery, plates, pans, microwave. Kitchen is shared maximum between 4 students.

FACILITIES:

WIFI, Hydro, Gym, bicycle storage, washer and dryer inside the apartment at no extra cost. No air conditioner.

EXTRA COST FACILITIES:

Paid underground parking. Laundry on site at no extra cost.

NEIGHBOURHOOD:

Quiet neighborhood with many parks at proximity, 10min walking distance from Skytrain station.

VISITORS/GUESTS:

One guest maximum per resident is permitted at any time. Overnight guests are not allowed. Guests must leave no later than 11pm.

NOISE:

Residents are required to respect all other residents and maintain a level of noise that does not disturb others. No loud music or sounds allowed after 11pm.

SMOKING:

All facilities and residents' room are

smoke-free.

RECEPTION/SECURITY DESK:

Reception is open during work hours from 9am to 6pm and 24/7 security surveillance.

CLEANING SERVICE:

Light cleaning service every 10 days in common area. Students are responsible for keeping their room clean. It is also their responsibility to maintain cleanliness in the kitchen by washing their dishes, pans and cutlery after cooking.

BEDDINGS/TOWELS:

Beddings in the bedroom is included. Student is responsible to wash them. Students are responsible to take their own towels.

MINIMUM WEEKS REQUESTS:

5 weeks minimum stay. Booking from Saturday to Saturday.

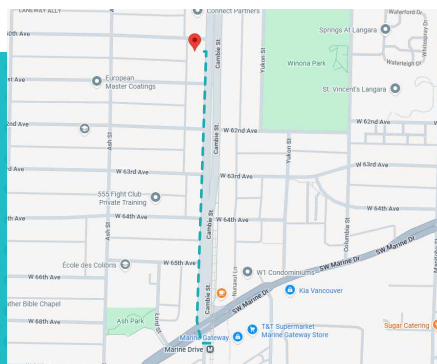
CHECK-IN/CHECK-OUT:

Check in between 4pm and 11pm / Check out 10am.

ACCOMMODATION LOCATION:

GEC Pearson is less than a 10-minute walk of the Marine Drive Canada Line station: a short 15-minute trip from Downtown Vancouver.

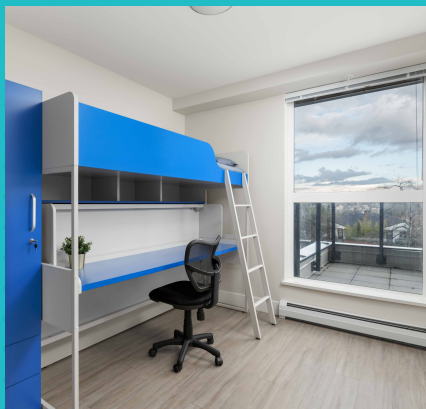
- Lock on the door
- Orientation after arrival
- Security Deposit
- Training room (aerobic or gym)
- Wi-fi
- Flexible Dates
- TV
- Hydro included



Only a short 8-min walk from the Marine Drive Canada Line station.

A short 15-minute trip from Downtown Vancouver.

GEC Pearson Residences



Book your stay now while rooms are available! Contact info@casacanada.com